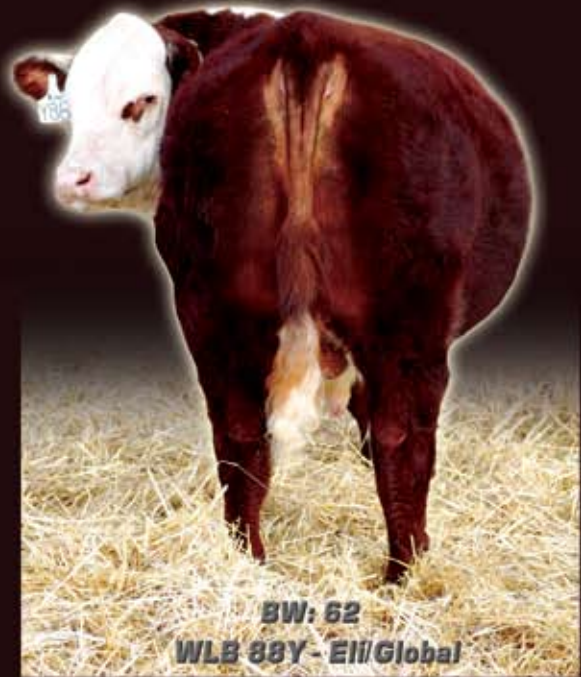


# WLB Livestock

8th Annual Bull Sale - 2 PM CST

**March 27, 2012**

At the Ranch, Douglas, MB



BW: 62  
WLB 88Y - Ell/Global

**40+** YEARLING BULLS  
POLLED HEREFORD  
BLACK/RED SIMMENTAL



BW: 89  
WLB 115Y - Fresh/World Class

ALL BULLS ARE

- BVD TESTED
- SEMEN TESTED
- TIE BROKE
- U.S. EXPORTABLE

Pictures of all sale bulls are now online. Videos soon to come.

[www.wblivestock.com](http://www.wblivestock.com)



BW: 84  
WLB 120Y - Global/World Class



BW: 87  
WLB 7Y - UPS 7101/19D



BW: 85  
WLB 103Y - Quaker/Fresh



BW: 97  
WLB 113Y - Embassy/World Class



BW: 98  
WLB 76Y - Shapley/WLB Rex



BW: 82  
WLB 32Y - Alliance/29F



BW: 95  
WLB 116Y - Universal/World Class

## WLB Livestock

BILL & NANCY BIGLIENI

Box 327, DOUGLAS, MB R0K 0R0

204-763-4697 204-729-7925

[wblivestock@inetlink.ca](mailto:wblivestock@inetlink.ca)

Contact us for a catalogue



[www.wblivestock.com](http://www.wblivestock.com)